



**HF2502 INSTRUMENT CABINET**

- > Size: 450 x 400 x 1700 mm.
- > Epoxy coated mild steel framework.
- > Stainless steel bottom.



**HF2500 INSTRUMENT CABINET**

- > Size: 960 x 400 x 1750 mm.
- > Epoxy coated mild steel framework.
- > Stainless steel bottom.



**HF2501 INSTRUMENT CABINET**

- > Size: 960 x 400 x 1750 mm.
- > Epoxy coated mild steel framework.



**HF2510 INSTRUMENT CABINET**

- > Size: 960 x 400 x 1750 mm.
- > Epoxy coated mild steel framework.
- > Stainless steel bottom.



**HF2512 INSTRUMENT CABINET**

- > Size: 960 x 400 x 1750 mm.
- > Epoxy coated mild steel framework.



**HF2520 MULTI FUNCTION CABINET**

- > Size: 1000 x 400 x 1750 mm.
- > Epoxy coated mild steel framework.
- > Stainless steel bottom.



**HF2522 MULTI FUNCTION CABINET**

- > Size: 1000 x 400 x 1750 mm.
- > Epoxy coated mild steel framework.



**HF2530 MEDICINE CABINET**

- > Size: 900 x 250 / 400 x 1750 mm.
- > Epoxy coated mild steel framework.
- > Stainless steel bottom.



**HF2540 MEDICINE CABINET**

- > Size: 900 x 250 / 530 x 1750 mm.
- > Epoxy coated mild steel framework.
- > Stainless steel bottom.



**HF2541 MULTI FUNCTION CABINET**

- > Size: 960 × 400 × 1750 mm.
- > Epoxy coated mild steel framework.



**HF2543 MULTI FUNCTION CABINET**

- > Size: 960 × 400 × 1750 mm.
- > Epoxy coated mild steel framework.



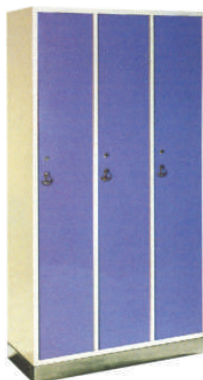
**HF2546 CLOTHING CABINET**

- > Size: 960 × 400 × 1750 mm.
- > Epoxy coated mild steel framework.



**HF2549 CLOTHING CABINET**

- > Size: 900 × 400 × 1750 mm.
- > Epoxy coated mild steel framework.



**HF2552 CLOTHING CABINET**

- > Size: 960 × 400 × 1750 mm.
- > Epoxy coated mild steel framework.
- > Stainless steel bottom.



**HF2555 CLOTHING CABINET**

- > Size: 960 × 400 × 1750 mm.
- > Epoxy coated mild steel framework.
- > Stainless steel bottom.



**HF2557 10 LOCKER CABINET**

- > Size: 900 × 400 × 1750 mm.
- > Epoxy coated mild steel framework.



**HF2550 9 LOCKER CABINET**

- > Size: 960 × 400 × 1750 mm.
- > Epoxy coated mild steel framework.
- > Stainless steel bottom.



**HF2560 21 LOCKER CABINET**

- > Size: 960 × 400 × 1750 mm.
- > Epoxy coated mild steel framework.
- > Stainless steel bottom.

# □ MOVABLE CABINETS / DRAWERS .....



**HF9400**

- > Movable Cabinet with two drawers.
- > W400× D560× H577mm
- > Epoxy powder coated mild steel frame work.



**HF9403**

- > Movable Cabinet with three drawers.
- > W400× D575× H650mm
- > Epoxy powder coated mild steel frame work.



**HF9406**

- > Movable Cabinet with four drawers.
- > W392× D570× H595mm
- > Epoxy powder coated mild steel frame work.
- > with Metal top.



**HF9412**

- > Movable Cabinet with four drawers.
- > W392× D570× H595mm
- > Epoxy powder coated mild steel frame work.
- > with plastic top



**HF9415**

- > Movable Cabinet with three drawers.
- > W398× D575× H478mm
- > Epoxy powder coated mild steel frame work.



**HF9418**

- > Movable Cabinet with two drawers.
- > W300× D533× H650mm
- > Epoxy powder coated mild steel frame work.



**HF9421**

- > Movable Cabinet with three drawers.
- > W390× D533× H650mm
- > Epoxy powder coated mild steel frame work.



**HF9424**

- > Movable Cabinet with three drawers.
- > W401× D640× H710mm
- > Epoxy powder coated mild steel frame work.



**HF9427**

- > Movable Cabinet with three drawers.
- > W401× D570× H655mm
- > Epoxy powder coated mild steel frame work.



**HF9430**

- > Movable Cabinet with three drawers.
- > W401× D560× H650mm
- > Epoxy powder coated mild steel frame work.



**HF9433**

- > Movable Cabinet with three drawers.
- > W401× D560× H650mm
- > Epoxy powder coated mild steel frame work.



**HF9436**

- > Movable Cabinet with three drawers.
- > W392× D570× H598mm
- > Epoxy powder coated mild steel frame work.



**HF9439 Filing Cabinet**

- > Filing Cabinet 6 drawers
- > W90×D45× H106 cm
- > Epoxy powder coated mild steel frame work.



**HF9442 Filing Cabinet**

- > Filing Cabinet 2 drawers
- > W46.5×D62× H76 cm
- > Epoxy powder coated mild steel frame work.



**HF9445 Filing Cabinet**

- > Filing Cabinet 3 drawers
- > W46.5×D62× H108 cm
- > Epoxy powder coated mild steel frame work.



**HF9448 Filing Cabinet**

- > Filing Cabinet 4 drawers
- > W46.5×D62× H140 cm
- > Epoxy powder coated mild steel frame work.



**HF9451 Filing Cabinet**

- > Filing Cabinet 4 drawers
- > W90×D45× H106 cm
- > Epoxy powder coated mild steel frame work.



**HF9454 Filing Cabinet**

- > Filing Cabinet 2 drawers
- > W90×D45× H74 cm
- > Epoxy powder coated mild steel frame work.



**HF9457 Filing Cabinet**

- > Filing Cabinet 3 drawers
- > W90×D45× H74 cm
- > Epoxy powder coated mild steel frame work.



**HF9460 Filing Cabinet**

- > Filing Cabinet 3 drawers
- > W90×D45× H106 cm
- > Epoxy powder coated mild steel frame work.



**HF9463 Filing Cabinet**

- > Filing Cabinet 3 drawers
- > W91.5 × D45.7 × H107.5 cm
- > Epoxy powder coated mild steel frame work.



**HF9466 Filing Cabinet**

- > Filing Cabinet 3 drawers
- > W91.5 × D45.7 × H75 cm
- > Epoxy powder coated mild steel frame work.



**HF9468 Filing Cabinet**

- > Filing Cabinet 2 doors
- > W91.5 × D45.7 × H108.6 cm
- > Epoxy powder coated mild steel frame work.



**HF9469 Filing Cabinet**

- > Filing Cabinet 4 drawers
- > W91.5 × D45.7 × H141.5 cm
- > Epoxy powder coated mild steel frame work.

# □ WORKING TABLE & SCRUB UNIT ....



**HF9470 Working Table**

- > Working table with stainless steel surface and bottom
- > Overall Size 1800x700x800mm



**HF9471 Working Table**

- > Working table with stainless steel surface and bottom.
- > Overall Size 1500x700x800mm



**HF9472 Working Table**

- > Composite working table with stainless steel top and base.
- > Overall Size 3000x700x800mm



**Hf9669 Scrub Unit**

- > Scrub Unit
- > Stainless Steel Framework.
- > Sz.: 1650 x 650 x 800/1100mm.



**HF9667 Scrub Unit**

- > Scrub Unit
- > Stainless Steel Framework.
- > Sz.: 2150 x 650 x 800/1700mm.



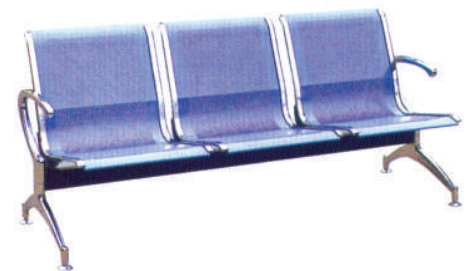
**HF9270 WAITING CHAIR**

- > Waiting Chairs made of Epoxy coated steel.
- > 2 Seater.



**HF9275 WAITING CHAIR**

- > Waiting Chairs made of Epoxy coated steel.
- > 2 Seater.



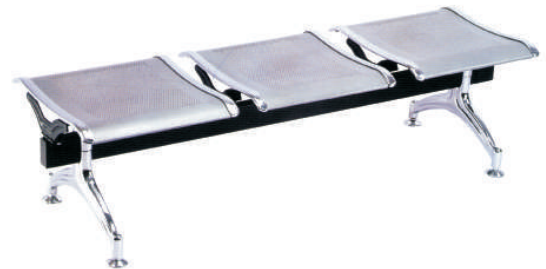
**HF9280 WAITING CHAIR**

- > Waiting Chairs made of Epoxy coated steel.
- > 3 Seater.



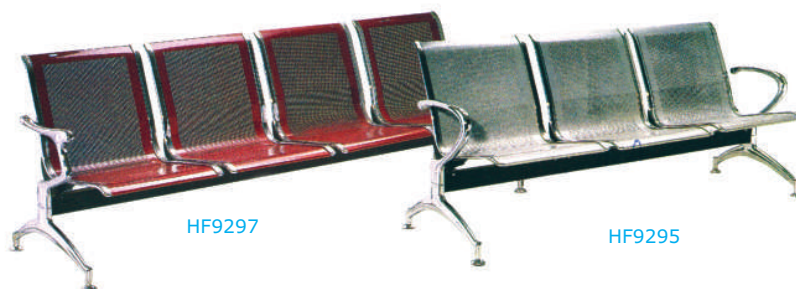
**HF9290 WAITING CHAIR**

- > Waiting Chairs made of Epoxy coated steel.
- > 3 Seater.



**HF9293 WAITING BENCH**

- > Waiting Bench made of Epoxy coated steel.
- > 3 Seater.



HF9297

HF9295

**HF9295 WAITING CHAIR**

- > Waiting Chairs made of Epoxy coated steel.
- > 3 Seater.

**HF9297 : 4 Seater.**



**HF9000 Doctor Stool**

- > Doctor / Nurse Stool.
- > Height adjustable.
- > Mounted on 5 swivel castors.



**HF9010 Doctor Stool**

- > Doctor / Nurse Stool.
- > Height adjustable.
- > Mounted on 5 swivel castors.



**HF9020 Doctor Chair**

- > Doctor / Nurse Chair
- > Height adjustable.
- > Mounted on 5 swivel castors.



**HF9030 Doctor Chair**

- > Doctor / Nurse Chair
- > Height adjustable.
- > Mounted on 5 swivel castors.



**HF9100 Doctor Chair**

- > Doctor / Nurse Chair
- > Height adjustable.
- > With Back rest.
- > Mounted on 5 swivel castors.



**HF9120 Doctor Chair**

- > Doctor / Nurse Chair
- > Height adjustable.
- > With arm rest & Back rest.
- > Mounted on 5 swivel castors.



**HF9200 Nurse Chair**

- > Visitor / Nurse Chair
- > Stackable



**HF9220 Nurse Chair**

- > Visitor / Nurse Chair
- > With arm rest and back rest.
- > Stackable



**HF9250a**  
Chair with writing table



**HF9235 Visitor Chair**

- > Visitor / Nurse Chair
- > Stackable



**HF9240 Visitor Chair**

- > Visitor / Nurse Chair
- > With arm rest.
- > Stackable



**HF9251 Visitor Chair**

- > Visitor / Nurse Chair
- > Stackable



**HF9305 Office table**

- > Framework made of mild steel epoxy coated steel.
- > Laminated wooden top, Size 120x70x3cm
- > Overall Size 120x70x74cm
- > With 3 drawer cabinet.



**HF9307 Office Table**

- > Framework made of mild steel epoxy coated steel.
- > Laminated wooden top, Size 140x70x3cm
- > Overall Size 140x70x74cm
- > With 3 drawer cabinet on right side.
- > With 3 drawer cabinet on left side.



**HF9311 Office Table**

- > Framework made of mild steel epoxy coated steel.
- > Laminated wooden top, Size 120x70x3cm
- > Overall Size 120x70x74cm
- > With 3 drawer movable cabinet.



**HF9316 Office Table**

- > Framework made of mild steel epoxy coated steel.
- > Laminated wooden top, Size 160x70x3cm
- > Overall Size 160x70x74cm
- > With 3 drawer movable cabinet on right.
- > With 3 drawer movable cabinet on left.



**HF9320 Office Table**

- > Framework made of mild steel epoxy coated steel.
- > Laminated wooden top, Size 120x70x3cm
- > Overall Size 120x70x74cm
- > With 2 drawer cabinet.
- > With keyboard tray.



**HF9325 Office Table**

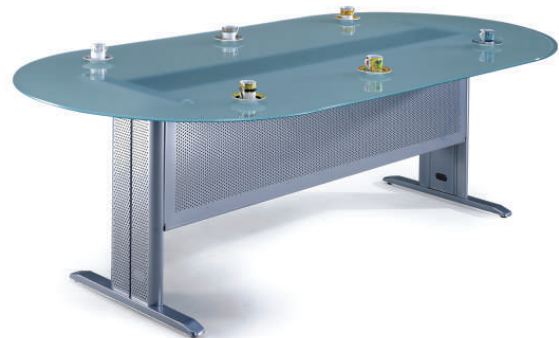
- > Framework made of mild steel epoxy coated steel.
- > Laminated wooden top, Size 160x70x3cm & 100x45x3cm
- > Overall Size 160x70x74cm & 100x45x74cm
- > With 3 drawer cabinet

# ☐ CONFERENCE TABLES .....



**HF9350 Conference Table**

- > Framework made of mild steel epoxy coated steel.
- > Laminated Wooden top, Size 180x96x3cm
- > Overall Size 180x96x74cm



**HF9355 Conference Table**

- > Framework made of mild steel epoxy coated steel.
- > Glass top, Size 240x120x1cm
- > Overall Size 240x120x74cm



**HF9362 Conference Table**

- > Framework made of mild steel epoxy coated steel.
- > Laminated Wooden top, Dia 90 cm
- > Overall Size Dia 90 cm x Ht. 74cm



**HF9369 Conference Table**

- > Framework made of mild steel epoxy coated steel.
- > Glass top, Dia 90 cm
- > Overall Size Dia 90 cm x Ht. 74cm



**HF9372 Office Table**

- > Framework made of mild steel epoxy coated steel.
- > Laminated Wooden table top, Size 160x70x3 (R 170) cm & 100x45x3 cm
- > Overall Size W160x D70 x H75 (R 170) cm
- > Mobile 3 drawer cabinet on side.
- > Attached 3 drawer cabinet on other side.



**HF9356 Conference Table**

- > Size : 180 x 90 x 74 cm
- > Wood Grain oval : 180 x 90 x 3 cm

*(Minimum order quantity for conference table is approx. 300 pcs.)*